



a fashionable life

Influencer Nina Suess teamed up with designer Theresa Obermoser to create the perfect pad for stylish living

✦ PHOTOGRAPHY *Vigo Jansons*
WORDS *Karine Monié*



LIVING AREA

This is designed to be cossetting. 'You just wanna chill here but it's also so elegant,' says Nina.

Bespoke **sofa**, Flow & Show. **Chairs**, Ferm Living. **Floor lamp**, A Modern Grand Tour. **Pendant light**, Soho Home. **Wall lights**, Kelly Wearstler. **Fireplace**, English Fireplaces. **Rug**, ADA. **Artwork**, Benedikt Muxel

home profile

THE OWNER

Fashion blogger and influencer Nina Suess.

THE PROPERTY

A 200sq m apartment located in a Victorian red-brick mansion block. It features a large open-plan living/dining room, a kitchen, two bedrooms with en suites, a study, a utility/workout space and a guest cloakroom.



DINING AREA

The slick, chic space is perfect for professional events as well as having friends over for dinner.

Dining table, Gallotti&Radice.

Pendant light, Isabel Hamm.

Chairs, Dutchbone. **Timber**

floor, Benott

W

ith more than 380,000 followers on Instagram, it's safe to say that fashion blogger Nina Suess is a successful influencer. Hailing from Germany, she has chosen London – more specifically, a beautiful residential street in Kensington, surrounded by an up-and-coming area currently under redevelopment – as the setting for her busy life.

And, as with her entrepreneurial job, Nina has invested a lot of time and effort into achieving her dream home. 'I think I must have looked at more than 300 places in all, over a time period of almost two years,' she says. 'I wanted to find something that had potential, but that can be difficult with old English architecture.'

What immediately convinced Nina about this apartment was its size: 'There were too many rooms, but I was able to see what we could make out of it,' she explains. Once she had settled on the flat, Nina needed some help to transform its interior, so she called on Theresa Obermoser [far right, with Nina], founder of TO Interior Design, to take on the task. 'I had always dreamed of a big open living room and that's exactly what we did,' says Nina.

'When Nina asked me to design her home, I said yes immediately,' remembers Theresa. 'I respect her sense of fashion; it's always a bit of everything but very elegantly combined.' Aware of Nina's taste, Theresa knew this was a client who was open to bold design in her home. 'Nina wants to live like she dresses,' says Theresa. 'We both don't believe in trends – we believe in extravagant, timeless pieces.' Playing around with the layout allowed Theresa to optimise the space for Nina's way of living, replacing the original four bedrooms with two luxurious en suite bedrooms – which, obviously, feature plenty of storage for Nina's clothes – plus a workout room and a study.



With its ornate cornicing and wall panelling, the apartment has the grand feel of the Victorian building in which it sits, but thanks to Theresa's intervention it also truly reflects its owner. 'Theresa has known me for a long time and she was able to capture my personality through the interior design and decoration: traditional, yet a little eclectic,' says Nina. 'The idea here was to translate a fashion show into an interior design,' adds Theresa.

To do this, Theresa brought a different feel and colour scheme to every room using a variety of shapes and materials – from vibrant ochre velvets, a forest green patterned headboard and

delicate textured curtain fabrics to black-and-white contrasts and brushed brass details. All the while, the main source of inspiration was Nina's wardrobe. 'In order to reflect her fashion style through the interiors, it was important to understand her own design language,' explains Theresa. 'Nina then gave me a lot of freedom to interpret it.'

In addition to the furniture and lighting sourced from the likes of Ferm Living, Menu, Kelly Wearstler, Allied Maker and Bocci, TO Interior Design also custom designed elements, such as the luxurious beds and sofa, to create that truly bespoke feel. 'This is, by far, the most extravagant and opulent project I've done to date,' observes Theresa.

As Nina is constantly travelling, Theresa worked hard on creating a sanctuary where she can unwind and relax between trips. At the same time, the goal was to shape a place where Nina can easily host professional events. And with every small corner perfectly styled to be easily Instagrammable, the luxuriously chic result is made to measure. 'We managed to create a space that really feels like home,' concludes Nina.

x

tointeriordesign.com; ninasuessarchives.com



home truths

DESIGN BRAND YOU LOVE?

C&C Milano — I can't get enough of their fabrics.
The patterns are just incredible.

FAVOURITE WALL COLOUR?

Off-white. Going for a proper white makes a space
look too sterile. You want a cosy feel.

DREAM PIECE OF FURNITURE?

My dining table by Gallotti&Radice, which manages
to be both massive and elegant.

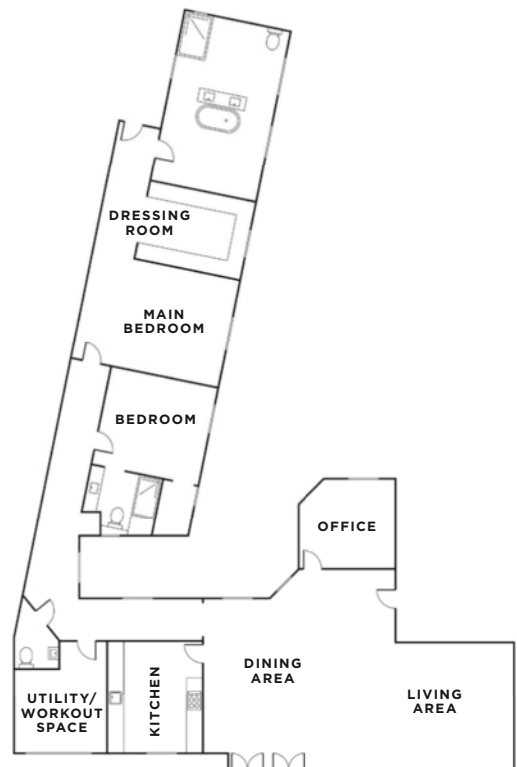
ESSENTIAL DECORATIVE ACCESSORY?

Dried flowers. I have them all over the flat - they are
no work, yet incredibly beautiful.

BIGGEST DESIGN MISTAKE?

There are none... Thank you Theresa!

the blueprint





KITCHEN

'This is always neat,' says Nina. 'Usually I always have chaos in the kitchen, but we managed to create a space where keeping it organised is much easier.'

Kitchen, Lauren Nicholas

ENTRANCE

Demarcated with two console tables, this area was opened up completely so there is no separate hallway.

Ceiling lights, Mullan Lighting. White **table lamp**, Ferm Living. Brass **table lamps**, Another Human. The Vilette **console table** at Cox & Cox is similar

CLOAKROOM

There's no stinting on the glam factor in the guest WC.

Marble **basin**, custom-made. Safari Dance **wallpaper**, Cole & Son. The Arden Leaf **pendant** at Perch & Parrow is similar

SHOE DISPLAY

'This was full-on Theresa's idea and I love it,' says Nina. 'Life is too short not to showcase your most amazing shoes.'

Shelves, custom-made - try the Museum shelf by String





MAIN BATHROOM

'I always had quite dark bathrooms, so it was important for me to have enough light in here,' says Nina

Vanity unit and swivel mirrors, all custom-made. Taps, VADO

CLOSET AREA

As Nina is a fashion influencer, it's no surprise that clothing storage was a key requirement.

Lights, Sogni Di Cristallo.
Curtains, C&C Milano

GUEST BEDROOM

Theresa's layering of subtly patterned and textured fabrics prevents the neutral colour scheme from becoming bland.

Bespoke bed, Flow & Show.
Pendant light, Sogni Di Cristallo.
Side table, Andrew Martin